

New Maths GCSE: A22 - Higher Inequalities Collection!



Name:

Date:

Show $x > -1$ on a number line

A)

B)

C)

D)

Correct Answer: A B C D

Explanation:

.....

.....

.....

.....

.....

What inequality is shown by the number line?

A) $1 \leq x \leq 13$ B) $1 < x \leq 13$

C) $1 > x \geq 13$ D) $1 \leq x < 13$

www.coopsonline.co.uk

Correct Answer: A B C D

Explanation:

.....

.....

.....

.....

.....

n is an integer.
 $-1 \leq n < 4$
 List the possible value of n .

possible values are (2)

What should go in the shaded box?

A) -1, 0, 1, 2, 3 B) 1, 2, 3

C) -1, 1, 2, 3 D) -1, 0, 1, 2, 3, 4

Questions provided by JustMaths

Correct Answer: A B C D

Explanation:

.....

.....

.....

.....

.....

What is the solution to this linear inequality?

$$x - 3 < 2$$

- A** $x = 5$ **B** $x < 5$
C $x > 5$ **D** $x < -1$

Correct Answer: A B C D

Explanation:

.....
.....
.....
.....
.....

What is the solution to this linear inequality?

$$4x - 3 > 5$$

- A** $x > 32$ **B** $x > \frac{1}{2}$
C $x > 2$ **D** $x > 8$

Correct Answer: A B C D

Explanation:

.....
.....
.....
.....
.....

What is the solution to this linear inequality?

$$6x + 1 < 4x - 7$$

- A** $x < -4$ **B** $x < -3$
C $x > -3$ **D** $x > -4$

Correct Answer: A B C D

Explanation:

.....
.....
.....
.....
.....

What is the solution to this linear inequality?

$$5 - 2x < 7$$

- A** $x > 1$ **B** $x < 1$
C $x < -1$ **D** $x > -1$

Correct Answer: A B C D

Explanation:

.....
.....
.....
.....
.....

What is the solution to this linear inequality?

$$6 - x < 2x$$

A $x < 6$

B $x > 6$

C $x > 2$

D $x < 2$

Correct Answer: A B C D

Explanation:

.....

.....

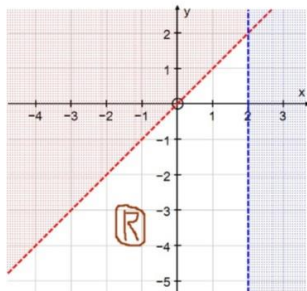
.....

.....

.....

.....

Which set of inequalities describes the blank region marked R?



A) $y > x, x < 2$

B) $x < y, x > 2$

C) $y < x, x < 2$

D) $y < x, y < 2$

Correct Answer: A B C D

Explanation:

.....

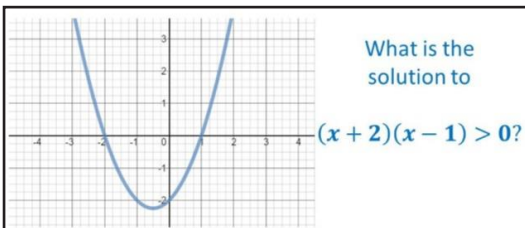
.....

.....

.....

.....

.....



A $x < -2$ or $x > 1$

B $-2 < x < 1$

C $x < -2$ and $x > 1$

D $-2 > x > 1$

Correct Answer: A B C D

Explanation:

.....

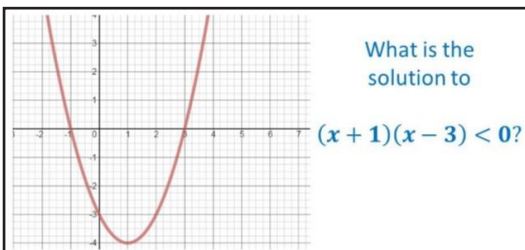
.....

.....

.....

.....

.....



A $x < -1$ and $x > 3$

B $x < -1$ or $x > 3$

C $-1 < x < 3$

D $-1 > x > 3$

Correct Answer: A B C D

Explanation:

.....

.....

.....

.....

.....

.....

Find the solution of $x^2 + x - 12 < 0$.

A $x < -4$ or $x > 3$

B $x < -3$ or $x > 4$

C $-4 < x < 3$

D $-3 < x < 4$

Copyright © Scottish Qualifications Authority

Correct Answer: A B C D

Explanation:

.....

.....

.....

.....

.....

.....