



Exit Ticket K1 - Plotting Quadratic Curves

Name:

Date:

This is the table of values for $y = x^2 - 1$

x	-4	-1	0	1	3
y			-1	0	★

What should replace the star?

- A 31 B 5
C 8 D 4

Correct Answer: A B C D

Explanation:

.....

.....

.....

.....

.....

.....

$$y = x^2 - 2x + 1$$

If $x = -3$, $y =$

- a) -16
 b) 16
 c) -4
 d) 4

Correct Answer: A B C D

Explanation:

.....

.....

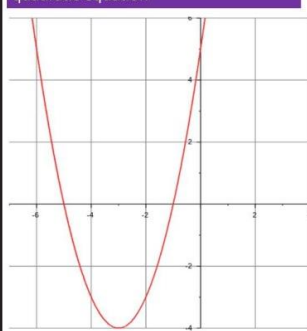
.....

.....

.....

.....

The following shows the graph of a quadratic equation



If you substituted $x = -5$ into the equation what would be the value of y ?

- A) 5
 B) -4
 C) 0
 D) Not enough information to tell

Designed using
Autograph

Correct Answer: A B C D

Explanation:

.....

.....

.....

.....

.....

.....