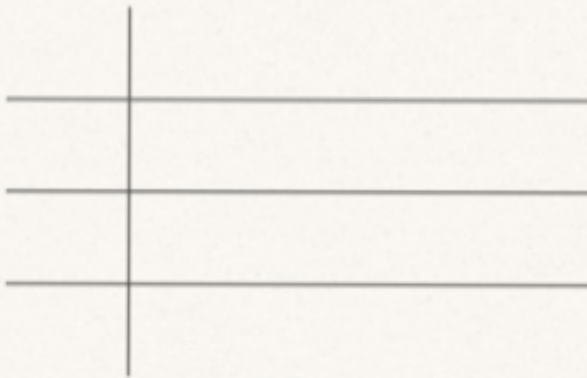


Here are 15 of his scores.

69	78	82	86	77
83	91	77	92	80
74	81	83	77	72

(a) Draw an ordered stem and leaf diagram to show this information.

You must include a key.



Key:

5. Here are the weights in grams, to the nearest gram, of 15 eggs.

33	46	41	54	51
38	60	44	55	51
62	55	52	37	63

- (a) Complete the ordered stem and leaf diagram to show this information.
You must include a key.



Key

(3)

Meg is going to pick at random one of the eggs.

- (b) Work out the probability that this egg will have a weight of more than 45 grams.

.....

(2)

7. Jo measured the times in seconds it took 18 students to run 400 m.
Here are the times.

67	78	79	98	96	103
75	85	94	92	61	80
82	86	90	95	90	89

- (a) Draw an ordered stem and leaf diagram to show this information.



Key:

(3)

- (b) Work out the median.

3. Here are the ages, in years, of 15 teachers.

35 52 42 27 36

23 31 41 50 34

44 28 45 45 53

Draw an ordered stem and leaf diagram to show this information.
You must include a key.



Key:

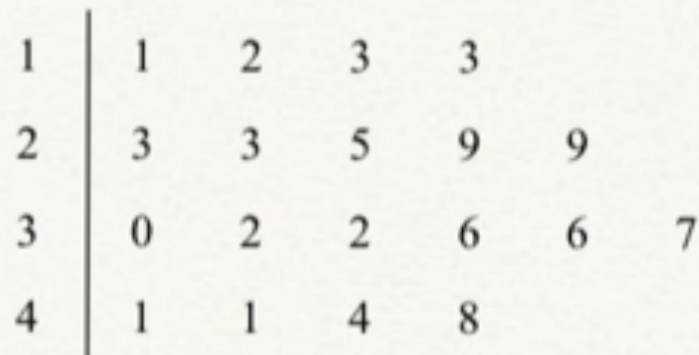
4 Here are the speeds, in miles per hour, of 16 cars.

31	52	43	49	36	35	33	29
54	43	44	46	42	39	55	48

Draw an ordered stem and leaf diagram for these speeds.

10. Jason collected some information about the heights of 19 plants.

This information is shown in the stem and leaf diagram.



Key 4|8 means 48 mm

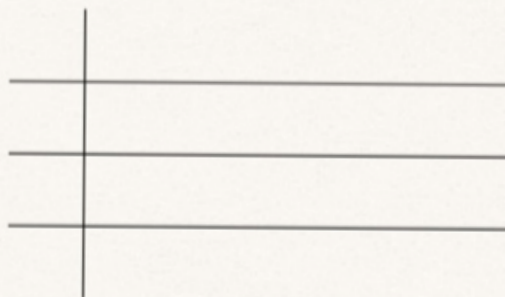
Find the median.

6. Here are the ages, in years, of 16 people.

36 48 18 25 36 28 45 30

38 27 41 16 36 48 28 21

- (a) Draw an ordered stem and leaf diagram to show this information.
You must include a key.



Key:

(3)

- (b) Find the median age.