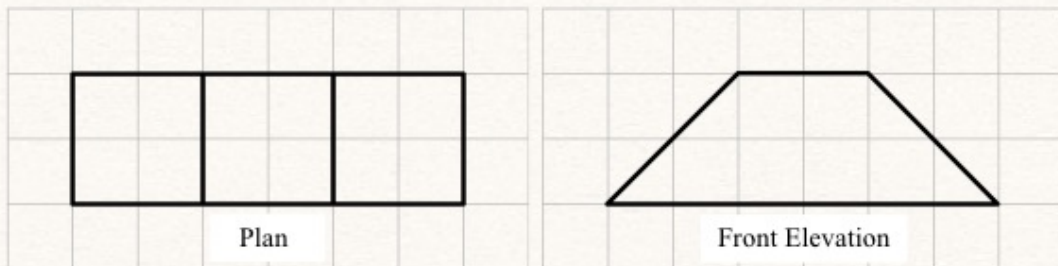


9. Here are the plan and front elevation of a solid shape.



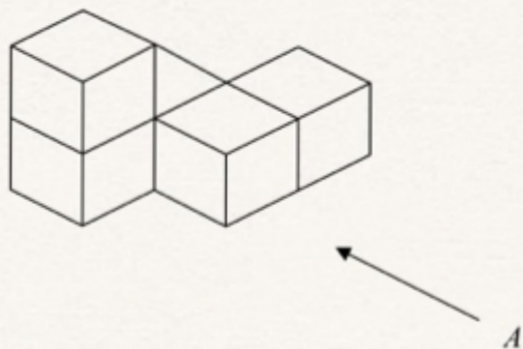
(a) On the grid below, draw the side elevation of the solid shape.



(2)

(b) In the space below, draw a sketch of the solid shape.

4. The diagram represents a solid made from 5 identical cubes.



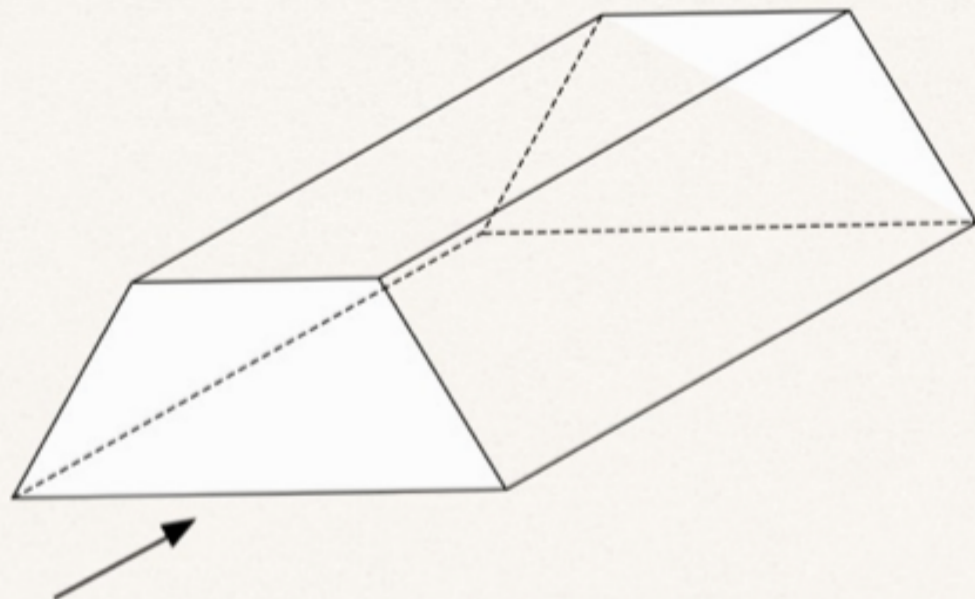
On the grid below, draw the view of the solid from direction *A*.



(Total 2 marks)

Q4

5.



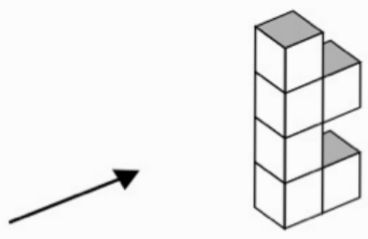
The diagram shows a prism.

(a) On the diagram, draw in **one** plane of symmetry for the prism.

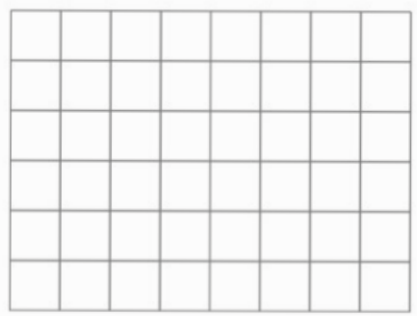
(2)

(b) In the space below, sketch the front elevation from the direction marked with an arrow.

8. The diagram shows a solid object made of 6 identical cubes.

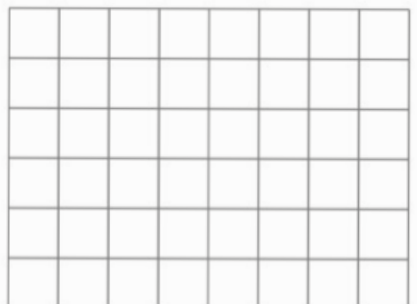


(a) On the grid below, draw the side elevation of the solid object from the direction of the arrow.



(2)

(b) On the grid below, draw the plan of the solid object.



5. Here are the front elevation, side elevation and the plan of a 3-D shape.

Front elevation



Side elevation



Plan



In the space below, draw a sketch of the 3-D shape.