

Centre No.						Paper Reference			Surname	Initial(s)			
Candidate No.						1	3	8	0	/	3	H	Signature

Paper Reference(s)

**1380/3H**

**Edexcel GCSE**

**Mathematics (Linear) – 1380**

Paper 3 (Non-Calculator)

**Simultaneous Equations**

Past Paper Questions

Arranged by Topic

Examiner's use only

--	--	--

Team Leader's use only

--	--	--



**Materials required for examination**

Ruler graduated in centimetres and millimetres, protractor, compasses, pen, HB pencil, eraser.  
Tracing paper may be used.

**Items included with question papers**

Nil

**Instructions to Candidates**

In the boxes above, write your centre number, candidate number, your surname, initials and signature. Check that you have the correct question paper.

Answer ALL the questions. Write your answers in the spaces provided in this question paper.

**You must NOT write on the formulae page.**

**Anything you write on the formulae page will gain NO credit.**

If you need more space to complete your answer to any question, use additional answer sheets.

**Information for Candidates**

The marks for individual questions and the parts of questions are shown in round brackets: e.g. (2).

There are 26 questions in this question paper. The total mark for this paper is 100.

There are 24 pages in this question paper. Any blank pages are indicated.

**Calculators must not be used.**

**Advice to Candidates**

Show all stages in any calculations.

Work steadily through the paper. Do not spend too long on one question.

If you cannot answer a question, leave it and attempt the next one.

Return at the end to those you have left out.

Lots more free papers at:

<http://bland.in>

Compiled by Peter Bland



*Turn over*

**edexcel**  
advancing learning, changing lives

More free papers and model answers from <http://bland.in>

1. Solve the simultaneous equations

$$\begin{aligned} 3x + 2y &= 8 \\ 2x + 5y &= -2 \end{aligned}$$

$$x = \dots\dots\dots$$

$$y = \dots\dots\dots$$

(Total 4 marks)

Leave  
blank

Q21



2. Solve the simultaneous equations

$$\begin{aligned}6x + 2y &= -3 \\4x - 3y &= 11\end{aligned}$$

$x = \dots\dots\dots, y = \dots\dots\dots$

**(Total 4 marks)**

Leave  
blank

**Q2**



3. Solve the simultaneous equations

$$x^2 + y^2 = 5$$

$$y = 3x + 1$$

Leave  
blank

$$x = \dots\dots\dots y = \dots\dots\dots$$

$$\text{or } x = \dots\dots\dots y = \dots\dots\dots$$

**(Total 6 marks)**

**Q3**

4. Solve the simultaneous equations

$$4x + y = -1$$

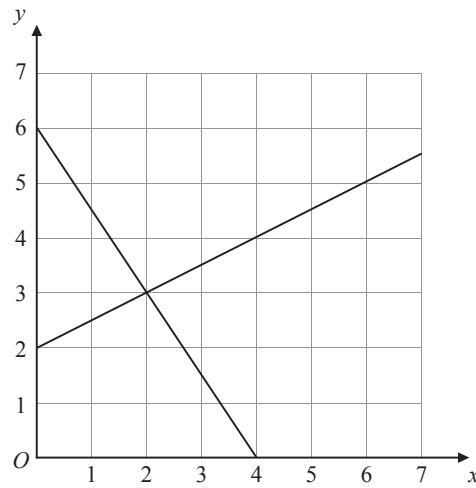
$$4x - 3y = 7$$

$$x = \dots\dots\dots y = \dots\dots\dots$$

**(Total 3 marks)**

**Q4**

5.



The diagram shows graphs of  $y = \frac{1}{2}x + 2$   
and  $2y + 3x = 12$

(a) Use the diagram to solve the simultaneous equations

$$y = \frac{1}{2}x + 2$$

$$2y + 3x = 12$$

$x = \dots\dots\dots y = \dots\dots\dots$   
(1)

(b) Find an equation of the straight line which is parallel to the line  $y = \frac{1}{2}x + 2$  and passes through the point (0, 4).

$\dots\dots\dots$   
(2)

(Total 3 marks)

Q5



. Solve the simultaneous equations

$$\begin{aligned}6x + 2y &= -3 \\4x - 3y &= 11\end{aligned}$$

Leave  
blank

$$x = \dots\dots\dots, y = \dots\dots\dots$$

**(Total 4 marks)**

**Q**

• Solve the simultaneous equations

$$\begin{aligned}4x + y &= 10 \\ 2x - 3y &= 19\end{aligned}$$

$x = \dots\dots\dots$

$y = \dots\dots\dots$

**(Total 3 marks)**

**Q**