

Centre No.						Paper Reference				Surname	Initial(s)			
Candidate No.						1	3	8	0	/	3	H	Signature	

Paper Reference(s)

**1380/3H**

**Edexcel GCSE**

**Mathematics (Linear) – 1380**

Paper 3 (Non-Calculator)

**Cumulative Frequency**

Past Paper Questions

Arranged by Topic

Examiner's use only

--	--	--

Team Leader's use only

--	--	--



**Materials required for examination**

Ruler graduated in centimetres and millimetres, protractor, compasses, pen, HB pencil, eraser.  
Tracing paper may be used.

**Items included with question papers**

Nil

**Instructions to Candidates**

In the boxes above, write your centre number, candidate number, your surname, initials and signature. Check that you have the correct question paper.

Answer ALL the questions. Write your answers in the spaces provided in this question paper.

**You must NOT write on the formulae page.**

**Anything you write on the formulae page will gain NO credit.**

If you need more space to complete your answer to any question, use additional answer sheets.

**Information for Candidates**

The marks for individual questions and the parts of questions are shown in round brackets: e.g. (2).

There are 26 questions in this question paper. The total mark for this paper is 100.

There are 24 pages in this question paper. Any blank pages are indicated.

**Calculators must not be used.**

**Advice to Candidates**

Show all stages in any calculations.

Work steadily through the paper. Do not spend too long on one question.

If you cannot answer a question, leave it and attempt the next one.

Return at the end to those you have left out.

Lots more free papers at:

<http://bland.in>

Compiled by Peter Bland



*Turn over*

**edexcel**  
advancing learning, changing lives

More free papers and model answers from <http://bland.in>

Leave blank

1. Lucy did a survey about the amounts of money spent by 120 men during their summer holidays.

The cumulative frequency table gives some information about the amounts of money spent by the 120 men.

Amount (£A) spent	Cumulative frequency
$0 \leq A < 100$	13
$0 \leq A < 150$	25
$0 \leq A < 200$	42
$0 \leq A < 250$	64
$0 \leq A < 300$	93
$0 \leq A < 350$	110
$0 \leq A < 400$	120

- (a) On the grid, draw a cumulative frequency diagram. (2)

- (b) Use your cumulative frequency diagram to estimate the median.

£ .....

(2)

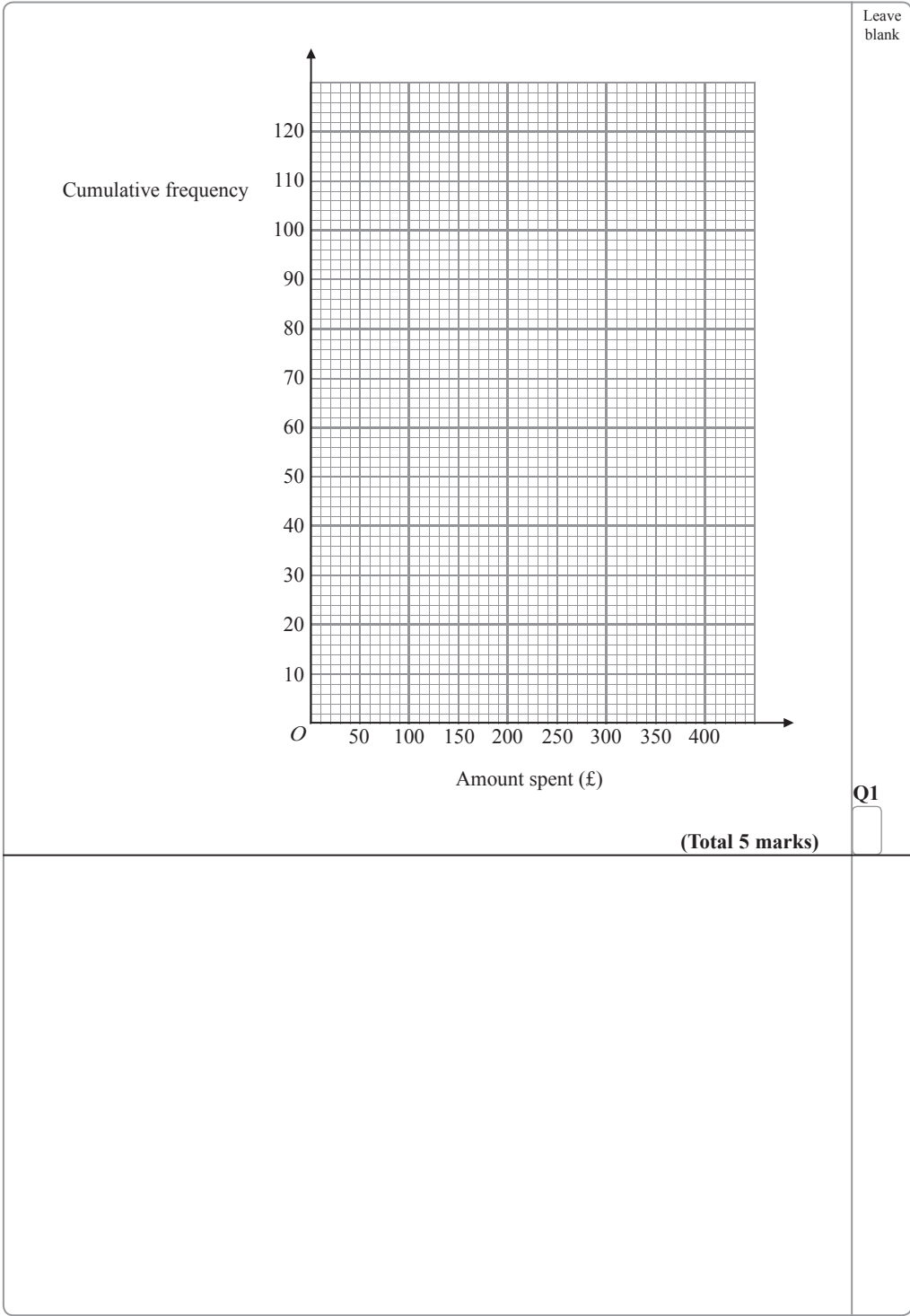
A survey of the amounts of money spent by 200 women during their summer holidays gave a median of £205

- (c) Compare the amounts of money spent by the women with the amounts of money spent by the men.

.....

.....

(1)



Leave  
blank

2. The table shows information about the amount spent by 100 customers in a supermarket.

Amount spent (£ $n$ )	Frequency
$0 < n \leq 20$	18
$20 < n \leq 40$	22
$40 < n \leq 60$	35
$60 < n \leq 80$	15
$80 < n \leq 100$	8
$100 < n \leq 120$	2

(a) Complete the cumulative frequency table for this information.

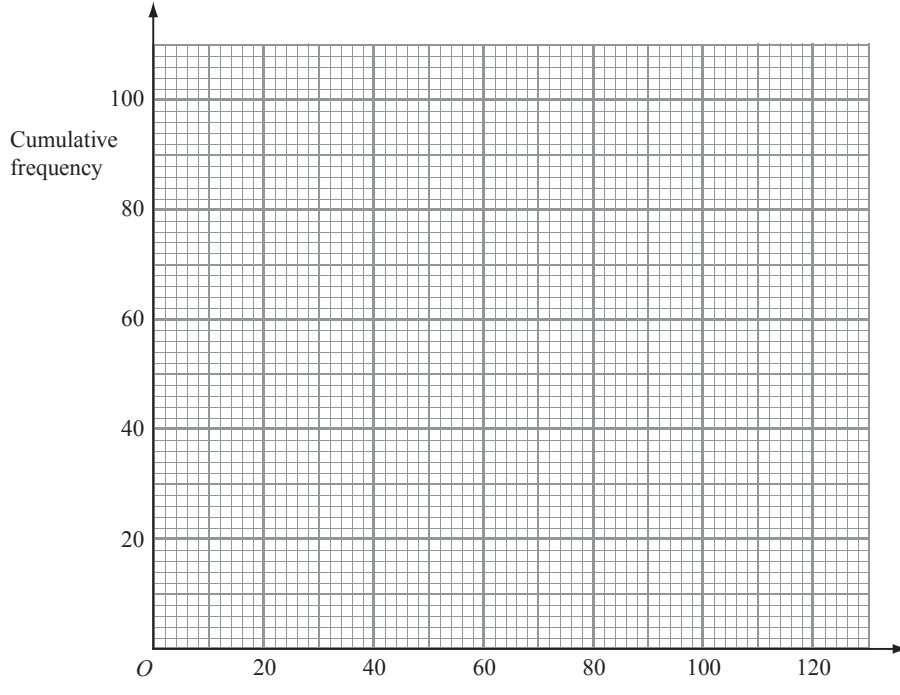
Amount spent (£ $n$ )	Cumulative frequency
$0 < n \leq 20$	18
$0 < n \leq 40$	
$0 < n \leq 60$	
$0 < n \leq 80$	
$0 < n \leq 100$	
$0 < n \leq 120$	

(1)

(b) On the grid, draw a cumulative frequency graph for your table.

(2)



 <p data-bbox="373 1182 1031 1228">(c) Use your graph to find an estimate for the median amount spent.</p> <p data-bbox="1055 1297 1218 1366">£ ..... (1)</p> <p data-bbox="1055 1377 1218 1412"><b>(Total 4 marks)</b></p>	Leave blank
	Q2 <input type="text"/>



Leave  
blank

3. A company tested 100 batteries.

The table shows information about the number of hours that the batteries lasted.

Time ( $t$ hours)	Frequency
$50 \leq t < 55$	12
$55 \leq t < 60$	21
$60 \leq t < 65$	36
$65 \leq t < 70$	23
$70 \leq t < 75$	8

(a) Complete the cumulative frequency table for this information.

(1)

Time ( $t$ hours)	Cumulative frequency
$50 \leq t < 55$	12
$50 \leq t < 60$	
$50 \leq t < 65$	
$50 \leq t < 70$	
$50 \leq t < 75$	

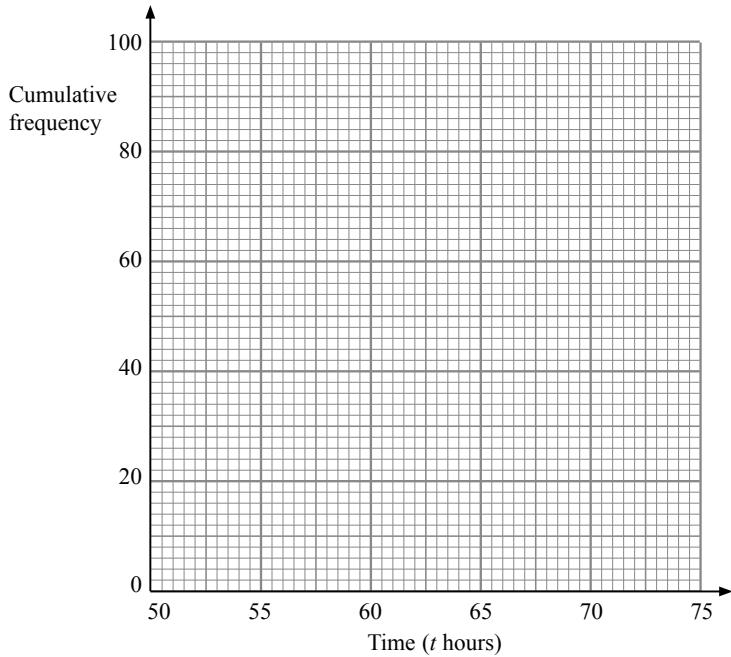
(b) On the grid, draw a cumulative frequency graph for your completed table.

(2)

(c) Use your completed graph to find an estimate for the median time.  
You must state the units of your answer.

.....  
(2)



	Leave blank
<p style="text-align: right;"><b>(Total 5 marks)</b></p>	<b>Q3</b> <input type="text"/>





Leave blank

4. The table gives some information about the delays, in minutes, of 80 flights.

Delay ( $n$ minutes)	Frequency
$0 < n \leq 20$	16
$20 < n \leq 30$	26
$30 < n \leq 40$	23
$40 < n \leq 50$	10
$50 < n \leq 60$	5

(a) Write down the modal class interval.

.....  
(1)

(b) Complete the cumulative frequency table.

Delay ( $n$ minutes)	Cumulative Frequency
$0 < n \leq 20$	
$0 < n \leq 30$	
$0 < n \leq 40$	
$0 < n \leq 50$	
$0 < n \leq 60$	

(1)

(c) On the grid opposite, draw a cumulative frequency graph for your table.

(2)

(d) Use your graph to find an estimate for

(i) the median delay,

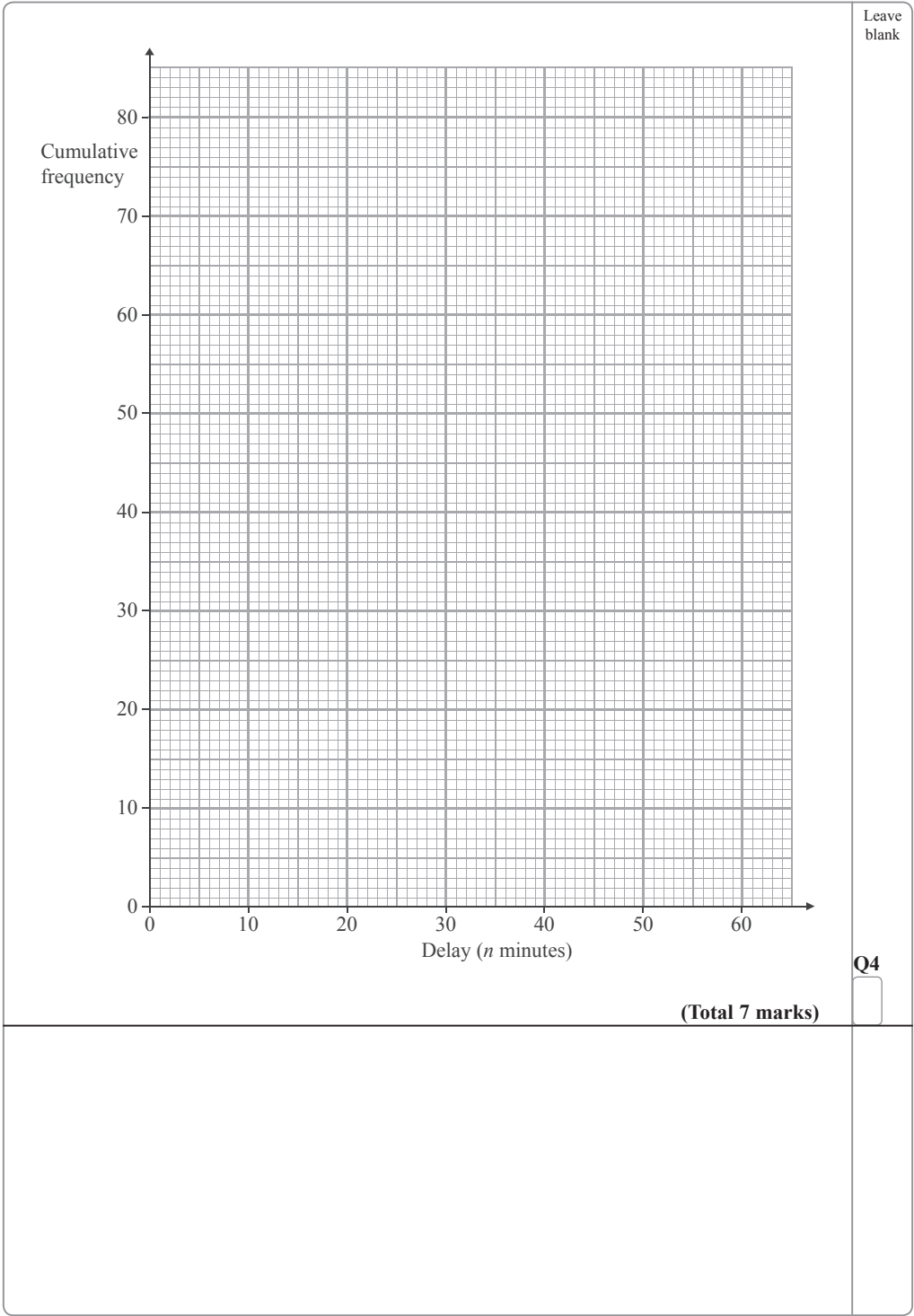
..... minutes

(ii) the interquartile range of the delays.

..... minutes

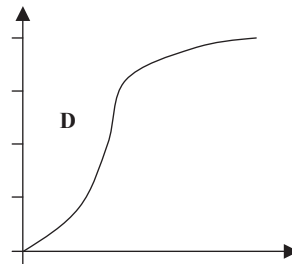
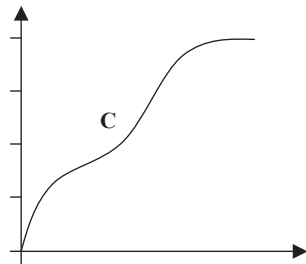
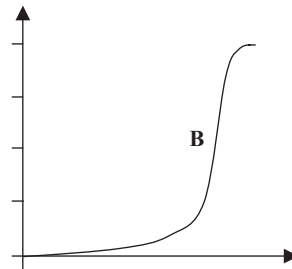
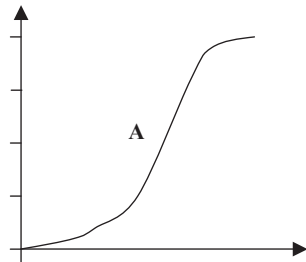
(3)



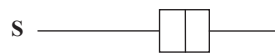
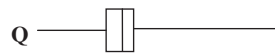
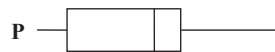


Leave blank

5. Here are four cumulative frequency diagrams.



Here are four box plots.



For each box plot, write down the letter of the appropriate cumulative frequency diagram.

P and .....

Q and .....

R and .....

S and .....

(Total 2 marks)

Q5

6 . The table shows information about the time,  $m$  minutes, it takes to show each of 120 films.

Time ( $m$ minutes)	Frequency
$70 < m \leq 80$	4
$80 < m \leq 90$	12
$90 < m \leq 100$	34
$100 < m \leq 110$	32
$110 < m \leq 120$	26
$120 < m \leq 130$	12

(a) Write down the modal class interval.

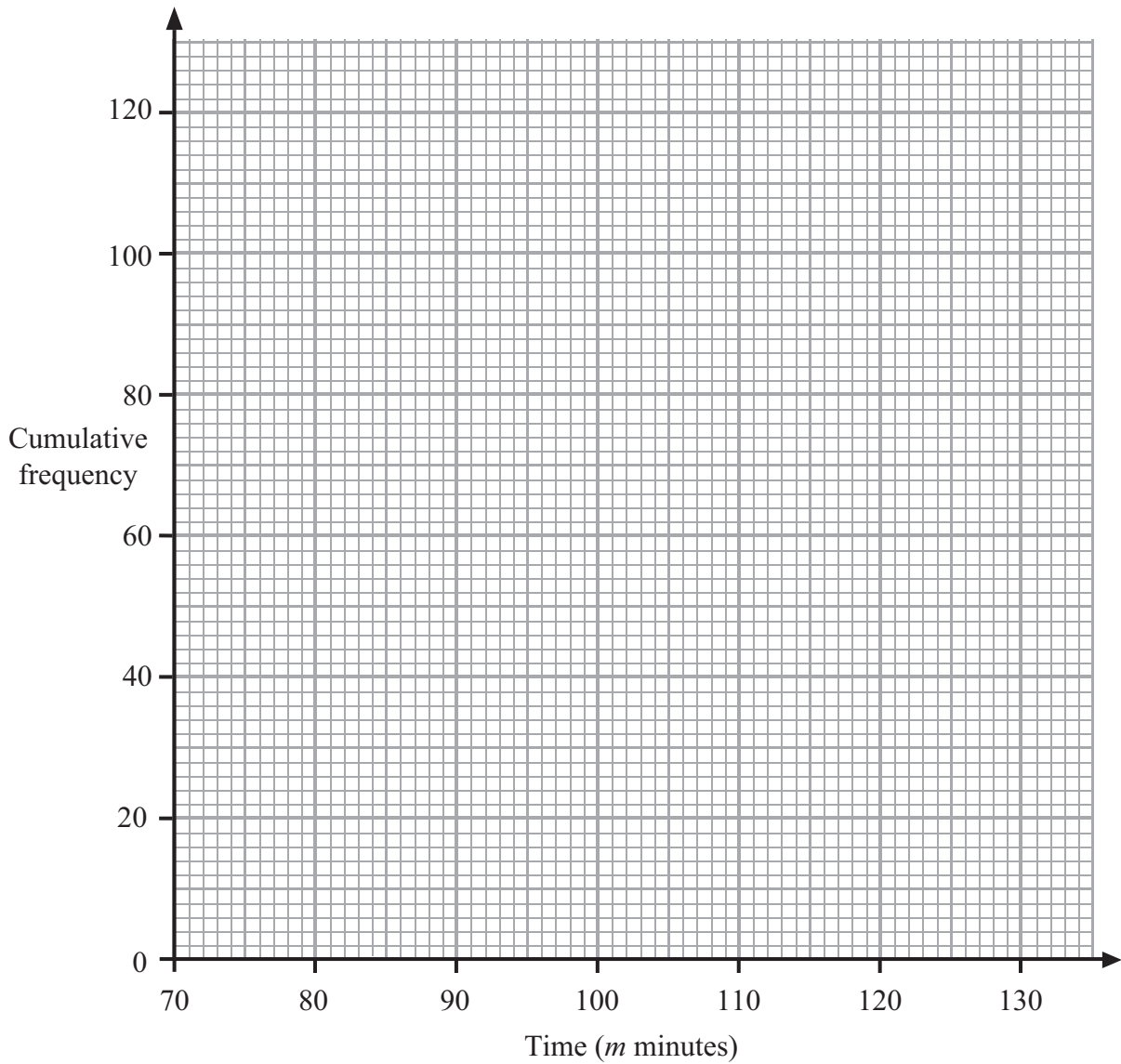
.....  
(1)

(b) Complete the cumulative frequency table.

Time ( $m$ minutes)	Cumulative frequency
$70 < m \leq 80$	4
$70 < m \leq 90$	
$70 < m \leq 100$	
$70 < m \leq 110$	
$70 < m \leq 120$	
$70 < m \leq 130$	

(1)

(c) On the grid, draw a cumulative frequency graph for your cumulative frequency table.



(2)

(d) Use your graph to find an estimate for the median.

..... minutes

(1)

(Total 5 marks)

Q6